



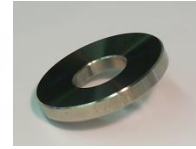
# Linear Abraser Taber Model 5750

## Possible Tests:

Abrasion tests with various abrasants  
Single and multiple pass scratch test

## Merits:

Variable stroke length (12.7, 25.4, 50.8, 76.2 and 101.6 mm)  
Variable stroke speed (2-75 cycles/min)  
Variable load (350g to 2100 g with supplementary discs)  
Different abrasants (diameter 6.35 and 12.7 mm) with broad variety in hardness  
Well defined scratch tests with two different diamond tips (90° angle and 3 or 3.5  $\mu\text{m}$  radius)  
Laser Alignment Guide



## Abradants



Different abrasants. CS 10 soft abrasant, H10 harder abrasant



Scratch Kit