

MULTISIDE-INSPECT

360° INSPECTION OF CYLINDRICAL OBJECTS

100 Percent Quality control

A special image processing system has been developed for surface inspection of cylindrical objects such as rods, tubes, sleeves, wires, etc. The objects are inspected in-line at speeds of up to 2 m/s.

Thanks to a specially developed lens attachment with integrated lighting, the lateral surface of the objects is inspected from four different directions, equally spaced at 90° intervals. The combination of these four angles ensures a 360° view of the object and enables simultaneous monitoring of up to 10 features such as length, diameter, dirt on surface...

Your benefits

- Test results within a fraction of a second
- Complete surface inspection of cylindrical parts
- Simultaneous monitoring of up to 10 features
- Integrated lighting and triggering
- Simple integration into existing systems

Fields of application

- Separate parts such as rods, tubes, sleeves, wires, pills, etc.
- Continuous materials such as wires, cables, pipes, profiles, etc.

Technical specifications

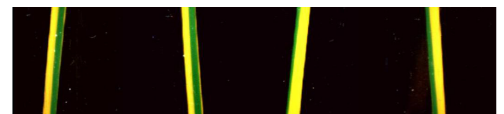
- Dimensions: 443 x 166 x 220 mm (W x H x D)
- Optical resolution typ. 0.1 mm/pixel
- Part diameter up to 50 mm
- Part speed up to 2 m/s



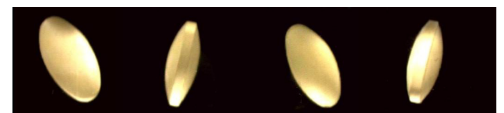
Multiside-Inspect module – internal view



Coloured sleeves



Colour check for two-coloured wire



Pills check

Contact

Ing. Petra Thanner MSc, MBA
Machine Vision
petra.thanner@profactor.at
Tel.: +43(0)7252 885-950

November 2010 V1.2

Austria's no. 1
in applied
manufacturing research